



DARWIN HOCKEY LEAGUE COMPETITION RULES

Adopted or Amended	By Whom	Date
Adopted	Board of Directors	30 March 2017
Amended	Board of Directors	19 April 2017
Amended	Board of Directors	1 February 2018
Amended	Board of Directors	22 February 2018
Amended	Board of Directors	27 March 2019
Amended	Board of Directors	23 April 2019
Amended	Board of Directors	19 July 2019
Amended	Board of Directors	5 June 2020

TABLE OF CONTENTS

PART 1: GENERAL PROVISIONS.....	4
2. DEFINITIONS AND INTERPRETATION	4
3. OVERARCHING DUTIES	7
4. COMPETITION STRUCTURE	7
5. CLUB REQUIREMENTS.....	7
6. COMMUNICATION AND NOTICES	7
7. GENERAL PROVISIONS.....	8
8. UNIFORMS	9
9. FEES	9
10. TEAM NOMINATIONS AND TEAM WITHDRAWALS	10
11. FIXTURES.....	10
PART 3: PLAYER PROVISIONS.....	11
12. PLAYER REGISTRATION	11
13. PLAYER TRANSFERS	11
14. GRADING.....	13
15. CORE PLAYERS	13
PART 4: MATCH PROVISIONS	15
16. RULES	15
17. TEAM CARDS.....	17
18. FORFEITS.....	18
19. TECHNICAL BENCH DUTY	18
20. UMPIRING	18
21. MISCELLANEOUS.....	19
22. THE PREMIERSHIP LADDER.....	20
23. BEST AND FAIREST	20
24. PLAY THE WHISTLE	20
25. CLUB CHAMPIONSHIP	21
26. TROPHIES.....	21

PART 6: PENALTY PROVISIONS	23
27. BEHAVIOUR	23
28. PENALTIES.....	23
29. PERSONAL PENALTIES.....	24
31. FINES.....	25
PART 7: DARWIN SPECIFIC PROVISIONS.....	27
32. C GRADE (OR THE LOWEST SENIOR GRADE).....	27
33. ON THE FIELD/OFF THE FIELD.....	27
34. INTERRUPTION AND POSTPONEMENT OF MATCHES –	27
PART 8: MAJOR ROUNDS PROVISIONS.....	29
35. PARTICIPATION REQUIREMENTS.....	29
36. MAKE-UP OF THE FINALS	29
37. PLAYER ELIGIBILITY FOR Major Rounds.....	29
38. MAJOR ROUNDS	30
39. RULES FOR MAJOR ROUNDS	30
40. MATCH TRIBUNAL.....	31
PART 10: HEALTH & SAFETY PROVISIONS	33
41. BLOOD POLICY	33
42. CONCUSSION PROCESS	33
Appendix A.....	36

The DHL Competition Rules should be read in conjunction with FIH Rules of Hockey. The FIH rules of Hockey remain the ultimate source of information regarding how matches should be conducted. In those instances where the DHL Competition Rules differ from the FIH Rules of Hockey, the DHL Competition Rules will take precedence.

PART 1: GENERAL PROVISIONS

1. POWER TO MAKE COMPETITION RULES

- 1.1 These Competition Rules are made by the Board of Hockey NT pursuant to the Constitution
- 1.2 In the event of a conflict between these Competition Rules and the Constitution, the Constitution shall prevail.

2. DEFINITIONS AND INTERPRETATION

- 2.1 All definitions in the Constitution and By Laws apply to these Competition Rules unless otherwise defined in these Competition Rules
- 2.2 In addition, the following definitions apply unless the context otherwise requires.

Academic Institution means any Primary or Secondary School. It does not include University.

Board means the members elected and appointed at an Annual General Meeting as the Directors to govern the operation of the Hockey in the Northern Territory.

Business Day means a day other than a Saturday, Sunday or public holiday in Darwin in the Northern Territory of Australia as declared pursuant to the *Public Holidays Act*.

Championship Trophy means the Club Championship trophy.

Code of Conduct means the code of conduct as made, from time to time, and issued by Hockey Australia and the Hockey NT Board.

Competition means the Darwin Hockey League [Note: as at the date of these Competition Rules the Competition is generally held from March to September.]

Compliant Player means a player who is registered with Hockey NT and their respective club in the prescribed manner.

Core Player means a Player who has been nominated by their Affiliated Club to only play in the designated Grade (or a higher Grade) in accordance with these Competition Rules.

Club Secretary means the Secretary of an Affiliated Club.

DHL AP means Darwin Hockey League Advisory Panel

Executive Officer means the person appointed by the Board to

Field means the Field nominated by the Board, from time to time, for a Match to be played during the Minor Rounds and Finals.

Fixture means the complete set of matches for the Competition including dates, times and venues.

Forced Loss means a loss as a result of a forfeit or by penalty for the breach of a rule.

Grade means the Junior Grades and Senior Grades (noting that A Grade is a 'higher' grade than C Grade and similarly under 17's is a 'higher' grade than under 11's).

GST means any tax calculated by reference to the value of goods or a service provided, calculated and levied at the point of sale or supply of the goods or services and includes GST within the meaning of that abbreviation in the GST Act and any penalties imposed.

GST Act means *A New Tax System (Goods and Services) Tax Act 1999* (Cth) and includes other GST related legislation and regulations under that legislation.

Hockey NT means the governing body of Hockey in the Northern Territory

Hockey Rules means the rules of outdoor hockey as made, from time to time, by the Federation International Hockey (as the international governing body of hockey) unless otherwise modified by these Competition Rules.

Junior Grade means those designated in Competition Rule 4.1(b).

Major Rounds (Finals) means the matches for each Grade (including semi-finals, preliminary final and the grand final) in the Competition.

Match means a game, played between two opposing teams in the same Grade, during the Competition.

Match Officials means the Umpires and Technical Bench Officials for the particular Match.

Minor Rounds means a set of matches for each Grade leading to qualification for participation in the Major Rounds of the Competition.

Non-Compliant Player means

- (a) a Player who is not registered pursuant to Competition Rule 12; and
- (b) a Transferring Player who has not received:
 - (i) a Clearance Notice; or
 - (ii) a determination from the Executive Officer pursuant to Competition Rule 13.
- (c) a Player who is in breach of Competition Rule 15.

Penalty Mechanism means the mechanism prescribed by the Board for the determination of a Match in accordance with these Competition Rules. [Note: this could be penalty strokes, 'one on one' or some other mechanism.]

Player means an individual registered to play for a Team in accordance with these Competition Rules.

Premiership Ladder means the ladder maintained by the DHL in accordance with Competition Rule 22.

Records Database means the electronic database used by HNT

- (a) Players;
- (b) Teams,
- (c) Affiliated Clubs; and
- (d) the results of each Match

Round means either, or both, Minor Rounds and Major Rounds

Senior Grade means those designated in Competition Rule 4.1(a).

Team:

- (a) consists of Players of the same Affiliated Club; and
- (b) is registered in a particular Grade pursuant to these Competition Rules.

Team Card means the form prescribed by the Board identified in Competition Rule 17.

Technical Bench Official means a person who acts in the capacity of a technical bench official during any Match.

Match Tribunal means a tribunal appointed by the Board and formed, from time-to-time, to investigate offences and complaints under these Competition Rules.

Playing Season means the period of time between Round 1 and the Grand Finals

Uniform includes the playing and alternate strips and socks meeting the requirements in Competition Rule 8 and approved by the Board as the Affiliated Club's uniform in accordance with Competition Rule 8.

Umpire means a person who acts in the capacity of an umpire during any Match.

2.3 In these Competition Rules:

- (a) headings and bold type are for convenience only and do not affect the interpretation of these Competition Rules;
- (b) the singular includes the plural and the plural includes the singular;
- (c) words of any gender include all genders;
- (d) where a word or expression is given a particular meaning, other parts of speech and grammatical forms of that word or expression have a corresponding meaning;
- (e) a reference to a document includes all amendments or supplements to, or replacements or novations of that document;
- (f) no provision of these Competition Rules will be construed adversely to a party because that party was responsible for the preparation of these Competition Rules or that provision;
- (g) a reference to a body, whether statutory or not:
- (h) which ceases to exist; or
- (i) whose powers or functions are transferred to another body
- (j) is a reference to the body which replaces it or which substantially succeeds to its powers or functions;
- (k) a reference to a time is a reference to the time in Darwin in the Northern Territory of Australia;
- (l) specifying anything in these Competition Rules after the words 'include' or 'for example' or similar expressions does not limit what else is included;
- (m) all monetary amounts are in Australia dollars, unless otherwise stated;
- (n) a reference to any legislation includes all delegated legislation made under it and amendments, consolidations, replacements or re-enactments of any of them;
- (o) unless otherwise defined the term "prescribed" means prescribed by the Board from time to time;
- (p) an amount payable by a party under these Competition Rules in respect of a supply by the other party which is a taxable supply under the GST Act, unless expressly provided otherwise, represents the GST exclusive value

and price of the supply and the recipient must pay to the supplier the GST Amount at the time that it pays the supplier the consideration for the Taxable Supply if a GST Invoice has been issued.

- (q) an example or note in the text of these Competition Rules is not part of these Competition Rules but are for provided guidance only; and
- (r) if an act must be done, or the last day upon which it may be done, falls on a specified day which is not a Business Day must be done on the next Business Day.

3. OVERARCHING DUTIES

The:

- (a) Affiliated Clubs (including their representatives);
- (b) Darwin Hockey League Advisory Panel; and
- (c) Members of the Board,
- (d) Hockey NT

must act in good faith in all their dealings pursuant to the Constitution, By Laws and these Competition Rules.

4. COMPETITION STRUCTURE

4.1 The Board has determined that at the date of these Competition Rules there will be the following categories of competitions for both male and female genders:

- (a) Senior Grades encompassing A Grade, B Grade and C Grade
- (b) Junior Grades encompassing Under 17, Under 14, Under 11 and Under 8

5. CLUB REQUIREMENTS

5.1 Each Affiliated Club must ensure that they Field a women's and a men's A Grade team for each Match in that Grade during the Playing Season.

5.2 Academic institutions when entering a team in the Junior Grades, are exempt from 5.1.

6. COMMUNICATION AND NOTICES

6.1 All applications, notices or other communication under these Competition Rules, unless otherwise determined by the Board from time to time, must be:

- (a) in Writing (which for the avoidance of doubt includes via electronic transmission); and

6.2 The Darwin Hockey League, the Board and the Affiliated Clubs will endeavour to comply with the prescribed communications protocol (determined by the Board from time to time).

7. GENERAL PROVISIONS

7.1 Entire understanding

Subject to the Constitution these Competition Rules:

- (a) are the entire agreement and understanding regarding the conduct of the Playing Season; and
- (b) supersedes any prior agreement or understanding on anything connected with that subject matter.

7.2 Variation

An amendment or variation to these Competition Rules is not effective unless it is made in accordance with the Constitution. The DHL AP shall consider rule changes and make recommendations to the Board. The Board may vary the Competition Rules at any time and must advise Affiliated Clubs of such variance within 24 hours of doing so.

7.3 Appendix A - Addendum

Where an Addendum to these Competition Rules is required such addendum shall be appended as Appendix A and apply to the season specified therein.

PART 2: TEAM PROVISIONS

8. UNIFORMS

8.1 Each Affiliated Club must supply the Executive Officer with details of its current Uniform for approval. Any Affiliated Club can apply to amend its Uniform prior to the commencement of the Playing Season by making an application to the Board in accordance with the Boards' requirements (determined from time to time).

8.2 Each Affiliated Club must ensure (individually):

- (a) that each shirt worn by a Player participating in a Senior Grade has a unique number within the relevant Team for the relevant Grade);
- (b) following the first three (3) Minor Rounds, each Player is wearing the Uniform (subject to any dispensation issued by the Executive Officer or DHL AP).

[Note: refer to Competition Rule 31.3 in relation to fines and fees imposed for a breach of this Competition Rule]

Uniform	Requirement
Skirt/shorts/skorts	<ul style="list-style-type: none">• Bicycle pants must be the same (or very similar) colour to the Uniform skirt or shorts;• Slight differences from the approved Uniform will be permitted if due to age, fading or manufacturers variations.
Socks	<ul style="list-style-type: none">• Slight differences from the approved Uniform will be permitted if due to age, fading or manufacturers variations;• Shin pads must be worn on the inside of the Uniform socks.
Shirts	<ul style="list-style-type: none">• Slight differences from the approved Uniform will be permitted if due to age, fading or manufacturers variations;• Numbers must be clearly displayed/visible on back of the shirt in a contrasting colour for all Senior Grades

9. FEES

9.1 In accordance with the Constitution the Board shall determine:

- (a) the nomination fees for each Team;
- (b) (if applicable) any other fees for the Affiliated Clubs; and
- (c) the manner of payment and receipt of all fees, due and payable to the DHL from time to time prior to the commencement of the Playing Season.

9.2 For the avoidance of doubt:

- (a) the Board may, at its absolute discretion, accept the part payment of fees or vary the manner and method of payment; and
- (b) notwithstanding any withdrawal or forfeiture of a Team or Affiliated Club any incurred fees remain due and payable to the DHL.

10. TEAM NOMINATIONS AND TEAM WITHDRAWALS

10.1 Any Affiliated Club may enter Teams for a Grade for the Competition by:

- (a) completing and lodging the prescribed entry form by the required deadline (as prescribed by the Board from time to time); and (b) paying the prescribed team nomination fee, to the DHL as specified by the Board from time to time.

10.2 For the avoidance of doubt the failure to comply with Competition Rule 10.1 renders a Team of an Affiliated Club ineligible to take part in the Playing Season.

10.3 If an Affiliated Club notifies the Executive Officer that a Team is being withdrawn (*withdrawn team*) after the commencement of the Playing Season during the minor rounds and before the commencement of the major rounds then:

- (a) all Matches played, or to be played, by the withdrawn team shall be deemed forfeits and scored appropriately; and
- (b) any team replacing the withdrawn team (*replacement team*) is able to score points for all Matches actually won or tied (as the replacement team), but shall not be credited with any points scored by the withdrawn team.

10.4 Any team withdrawing during the Major rounds shall be deemed a forced loss.

10.5 For the avoidance of doubt any withdrawn team after the first Match shall be:

- (a) fined the prescribed amount; and
- (b) liable for all nomination fees that remain unpaid and outstanding.

[Note: refer to Competition Rule 31.3 in relation to fines and fees imposed for a breach of this Competition Rule]

11. FIXTURES

11.1 The Board, in conjunction with the DHL AP, will determine the Fixtures for the Playing Season at least fourteen (14) days prior to the commencement of the Competition (subject to Team nominations being received in accordance with Competition Rule 10).

11.2 Prior to the Fixtures being determined in accordance with Competition Rule 11.1 each Affiliated Club is entitled, in extenuating circumstances, to make a submission to the DHL AP on matters affecting the Fixtures but the determination is at the absolute discretion of the Board.

PART 3: PLAYER PROVISIONS

12. PLAYER REGISTRATION

- 12.1 Each person who intends to play hockey during a Competition must, before participating in a Match as a Player, submit a duly completed and executed prescribed online registration form (in whatever form is acceptable to the Board) to their nominated Affiliated Club.
- (a) each Affiliated Club must complete any other details on the Records Database as required by the Board from time to time.
- 12.2 For the avoidance of doubt a person is not registered as a Player in the following circumstances:
- (a) the Records Database does not show the person to be registered in one (1) of the following DHL payment classes;
- (i) DHL – Player Under 8 Levy (8 years and under)
- (ii) DHL – Player Junior Levy (9 years to 18 years)
- (iii) DHL – Player Senior Levy (19 years and over)
- 12.3 The DHL shall on each Wednesday during the Playing Season provide, individually, to each Club Secretary a list of potential Non-Compliant Players. If an Affiliated Club cannot reasonably demonstrate the relevant individual's registration in accordance with Competition Rule 12.2 then the individual shall be deemed to be a Non-Compliant Player.

[Note: refer to Competition Rule 31.3 in relation to the associated penalties].

13. PLAYER TRANSFERS

[Note: the process below applies for the Affiliated Clubs in the Darwin Hockey League and is not relevant for individuals moving from interstate or Alice Springs].

- 13.1 If a person is or was a member of one Affiliated Club and registered pursuant to Competition Rule 12 and wishes to become a member of a different Affiliated Club (Transferring Player) that process is a player transfer (Player Transfer).
- 13.2 The Player Transfer must occur in the following manner:
- (a) subject to Competition Rule 13.1, a Player Transfer may take place prior to the commencement of the 3rd round;
- (b) the parties to a Player Transfer must duly complete and sign the prescribed form;
- (c) a Player Transfer cannot occur if the Transferring Player has not received written notification that all monies due and payable to their Affiliated Club has been paid and no monies are owed (Clearance Notice);
- (d) all documentation must be lodged with the Executive Officer at least one (1) hour before the scheduled start to relevant match in which the Transferring Player participates for the new Affiliated Club;
- (e) the new Affiliated Club of the Transferring Player must ensure that the Records Database is updated as necessary and the Affiliated Club must provide all necessary assistance in relation to this matter;
- (f) A player transferring from an Affiliated Club in Darwin to another Affiliated Club in Darwin will take across with them their core player status and penalty cards from the transferring Club.

- 13.3 Notwithstanding Competition Rule 13.2 a Transferring Player will have been deemed to have received the Clearance Notice from their Affiliated Club if:
- (a) the debt is incurred and unpaid by the Transferring Player for a period commencing three (3) years prior to the date of Transferring Player's application;
 - (b) the Board determines, upon application of the Transferring Player, that no monies are owing to the current Affiliated Club; or
 - (c) the Board determines, upon application of the Transferring Player, that:
 - (i) the current Affiliated Club has been dissolved or wound up pursuant to the Act; and
 - (ii) the Transferring Player has paid to the DHL a nominated amount of the outstanding fees due to the DHL from the current Affiliated Club.
- 13.4 In this clause the parties to a Player Transfer are:
- (a) the Transferring Player;
 - (b) the current Affiliated Club; and
 - (c) the new Affiliated Club.
- [Note: the process below applies for the other people who are not members of an Affiliated Clubs and are moving from interstate or Alice Springs].*
- 13.5 Permanent transfer: if a person, who relocates Darwin permanently, wishes to participate in a Match as a Player for an Affiliated Club then the Affiliated Club must:
- (a) ensure the player is registered online;
 - (b) confirmation from the individual's ordinary club that they are financial and compliant with the requirements of that association; and
 - (c) confirmation that the Records Database is updated as necessary including registration of the Player in accordance with Competition Rule 12, prior to participating in any Match.
- 13.6 Temporary transfer: if a person, who returns to or visits Darwin temporarily and wishes to participate in a Match as a Player for an Affiliated Club then the Affiliated Club must apply to the Executive Officer including:
- (a) details of the individual;
 - (b) confirmation from the individual's ordinary club that they are financial and compliant with the requirements of that association and available to participate in a Match;
 - (c) confirmation that the Records Database is updated as necessary including registration of the Player in accordance with Competition Rule 12, and
 - (d) confirmation that the individual is otherwise eligible to participate in the relevant Match, prior to participating in any Match.

14. GRADING

- 14.1 A player may not participate in both an A Grade and a C Grade match during the same round.
- 14.2 If a Player wishes to participate in both an A Grade and a C Grade match during the same round they can only do so with the consent of the DHL AP Chair.
- 14.3 If an Affiliated Club has more than one (1) Team nominated for a particular Grade then after the first three (3) Minor Rounds of the Competition a Player must only play for the Team they last played for in that Grade.
- (a) Only play one game per round for that grade
 - (b) Any player in breaches of the rules, will be deemed to be a non-compliant player
- 14.4 A player once having played in an A Grade match may not play in any C Grade match at any time during the season unless consent of the DHL AP Chair to do so has been provided. Applications need to be submitted to the Chair of DHL AP and must be done so 72 hours before the commencement of the next round.

15. CORE PLAYERS

- 15.1 The Affiliated Clubs have determined that in order to ensure fairness and in the spirit of sportsmanship, to institute a core player list in the following manner:
- (a) each Affiliated Club must, on the prescribed date and in the prescribed manner:
 - (i) prior to the commencement of the fifth Minor Round, nominate to the Executive Officer a completed list of seven (7) Core Players for each Team nominated for A Grade and B Grade by the Affiliated Club; and
 - (ii) If a Core Player does not participate as a Player in three (3) consecutive Matches, other than because of Representative Duty, then the Affiliated Club must nominate a substitute Core Player in accordance with Competition Rule 15.1. except that if the Core Player to be replaced is actually returning to the team for the fourth match then they can remain on the Core Player list.
- 15.2 In nominating Core Players and generally each Affiliated Club must ensure that:
- (a) any of their Players who during:
 - (i) the current; or
 - (ii) the immediately preceding two (2) Playing Season, is on Representative Duty for the under 18's teams, does not participate in the lowest Senior Grade (if there is more than one (1) Senior Grade); and
 - (b) any of their Players who during:
 - (i) the current; or
 - (ii) the immediately preceding two (2) Playing Season, is on Representative Duty for the under 21's and above teams are nominated as a Core Player for an A Grade Team.
 - (c) An Affiliated Club may apply to the Board to remove an individual from being a Core Player by:

- (i) submitting the relevant information to the Executive Officer; and
- (ii) proposing a replacement Core Player.

15.3 To ensure the Core Player process is being adhered to by all Affiliated Clubs the A Grade Core Player listings will be monitored to ensure that the best players from the Affiliated Clubs are identified and placed on the Core Player list.

15.4 Any player in breach of the definition of a core player, will be deemed to be a Non-Compliant Player.

PART 4: MATCH PROVISIONS

16. RULES

- 16.1 The Darwin Hockey League is bound by the FIH Hockey Rules except where the Constitution, By Laws or these Competition Rules specifically modify the operation of those Hockey Rules.
- 16.2 A Grade are to play 15-minute quarters, with 40 second stoppages for the initial awarding of a penalty corners and without stoppages for goals.
- 16.3 B & C Grades and Under 17s are to play 17-minute quarters without stoppages for PC's or goals.
- 16.4 All junior grades (except for U8's) are to play with a fully equipped goalkeeper.
- 16.5 Specific Rules for the Under 14 Junior Grade:

Pitch Layout	Full Pitch
Shin pads	All Players must wear shin pads
Mouthguards	All Players are strongly encouraged to wear a mouthguard
Match duration	The duration of a Match for under 14's is four (4) @ twelve (12) minute quarters with a five (5) minute half time break and two (2) minute breaks between the first and second and the third and fourth quarters.
Player eligibility	A person is eligible if they are the grade age or younger. [<i>Note: a person is the grade age is they reach that age on or before 1 January of the relevant year</i>]
	Any Player may play in their age Grade and in any older age Grade.
Interchange	Unlimited interchange players are permitted in the under 14's Grades.
Injury time	For under 14's, in the event of injury, the clock is stopped to allow time for the injured Player to leave the Field [<i>Note: the Umpire can stop the Match at any time</i>].
Goal keeping	See 16.5
Coaches	In the under 14 Grades one coach from each team is permitted to walk along the sidelines between the 23m lines.

16.7 Specific Rules for the Under 11 Junior Grade

Pitch Layout	Half pitch, sideline to sideline.
Shin pads	All players must wear shin pads
Mouthguards	All players are strongly encouraged to wear a mouthguard
Match duration	The duration of a Match for under 11's is 2 x 20 minute halves, with a five (5) minute half time break.
Player eligibility	A person is eligible if they are the grade age or younger. <i>[Note: a person is the grade age is they reach that age on or before 1 January of the relevant year]</i>
	Any Player may play in their age Grade and in any older age Grade.
Interchange	Unlimited interchange Players are permitted in the under 11 Grades.
Specifics	The "tomahawk" shot and overheads are not permitted in the under 11 Grade. Players are permitted to auto play free-hits.
Injury time	The clock does not stop in the event of injury.
Goal keeping	See 16.5
Players on the Field	There can be no more than seven (7) Players on the Field, per team, at any one (1) time.
	A Player may be interchanged at any time.
Penalty corners	As per the rules of hockey, the ball must be stopped outside the circle, with the first shot at goal to safely hit the backboard, or be on a trajectory to do so, in order to be awarded as a goal.
Penalty strokes	Penalty strokes may not be awarded. A penalty corner is awarded in place of this.
Coaching	One coach from each Team may be on the Field during the Match without interfering with play.
Sticks	A Player must not raise the stick in dangerous manner.
Points	In the under 11's Grade, there will be one week of finals consisting of matches per the finishing order on the ladder. The matches will be 1 v 2, 3 v 4, 5 v 6 etc. There will not be extra time for these finals, with a drawn match resulting in the team placed higher on the ladder being declared the winner.

17. TEAM CARDS

17.1 Prior to each Match commencing each Team shall provide a duly completed Team Card to the Technical Bench Officials including:

- (a) the full name of:
 - (i) the Players participating in the Match including substitutes;
 - (ii) a maximum of four (4) Club officials participating in the Match (including the coach and team manager);
- (b) the Uniform number of each Player (other than for the Junior Grades);
- (c) any other information required by the Board from time to time.
- (d) Failure to submit a card in accordance with rules 17.1 will result in a penalty.

17.2 A Technical Bench Official is to ensure:

- (a) any person not listed on the relevant Team Card is to be removed from the Field (including the bench); and
- (b) report any misconduct (of whatever severity) by making a note of the Team Card.
- (c) the commencement time of the Match;
- (d) the result of the Match and the score;
- (e) the goal scorers from each Team;
- (f) any penalty cards awarded and to which Players;
- (g) details of any incorrect Uniforms worn by which Players;
- (h) Suspended player(s) are not permitted on the team benches or field of play at any stage for a round that they are suspended from.
- (i) Any player who receives a red card in a match must remove themselves from the field of play and the team bench area for the remainder of the match.
- (f) any other information required by the DHL from time to time.

17.3 HNT will provide the Technical Bench weekly with the name(s) of player(s) who are ineligible to play.

17.4 Following completion of the Match the Umpires will, not necessarily in this order:

- (a) ensure that the Technical Bench Officials have completed the Team Card in accordance with Competition Rule 17.3;
- (b) complete the Team Card by including the following details:
 - (i) the best and fairest Players;
 - (ii) Play the Whistle points in accordance with Competition Rule 24;
 - (iii) any other information the Umpires need to provide to the DHL such as whether a further investigation into a Player's behaviour should be undertaken;
- (c) ensure both captains sign the Team Card;
- (d) record protests from the captains on the Team Card, and provide the completed Team Card to the DHL.
- (e) Provide a report to board if any other information is required

18. FORFEITS

- 18.1 A Club Secretary, where possible, must advise the Executive Officer and their opponent Club Secretary 48 hours prior to the match if their Team is unable to participate in a Match.
- 18.2 For the integrity of the Darwin Hockey League, forfeits in A grade matches are not permitted. Any match that is unable to be played will be re-scheduled, and all costs shall be borne by the club initiating this requirement.
- 18.3 In the event that an affiliated club cannot field an A grade team in accordance to rule 18.4.
- (a) all senior divisions games of the breaching club for that round will be deemed as a forced loss (loss of 5-0)
- 18.4 A Team is deemed to have forfeited if a Senior Team or nominated Junior Grades (being under 17s and 14s) is unable to take to the Field with at least seven (7) Players within ten (10) minutes of the Umpire having signalled the commencement of the Match.
- 18.5 A team in the Under 11 Junior Grade is deemed to have forfeited if they are unable to take the field with at least five (5) players within ten (10) minutes of the Umpire having signalled the commencement of the Match.
- 18.6 The Board will impose the following penalties against the relevant Affiliated Club and Team for the breaches of Competition Rule 18.1:
- (a) a fine in accordance with Competition Rule 31.3;
- (b) the result of the relevant Match will be a score line of 5-0 against the forfeiting Team, and
- (c) the Affiliated Club is liable for all costs associated with the Match (including the hire of the turf and the provision of Umpires) unless a "scratch match" is played.

19. TECHNICAL BENCH DUTY

- 19.1 The Board will determine, prior to the commencement of each Competition, the manner in which Technical Bench Officials will be organised and provided for the Matches.
- 19.2 Notwithstanding the above:
- (a) the Affiliated Clubs acknowledge that the provision of Technical Bench Officials is the responsibility for each Affiliated Club;
- (b) all Technical Bench Officials shall, following appointment or acting in the capacity of:
- (i) are subject to control and authority of the Darwin Hockey League;
- (ii) will undertake their duties to the best of their ability and in good faith; and in line with Code of Conduct

20. UMPIRING

- 20.1 The DHL AP will determine, prior to the commencement of each Competition, the manner in which Umpires will be organised and provided for the Matches.
- 20.2 Notwithstanding the above, if the two (2) appointed Umpires are not present on the Field five (5) minutes after the appointed commencement time of the Match then:

- (a) A Match may not commence with only one (1) Umpire (although the clock will commence); and
- (b) The respective Teams' captains shall appoint and agree upon Umpires

20.3 Notwithstanding the above:

- (a) all Umpires shall, following appointment are:
 - (i) subject to control and authority of the DHL; and
 - (ii) will undertake their duties to the best of their ability and in good faith; and in line with the Code of Conduct
 - (iii) it is the guiding principle that junior umpires should not umpire Matches in their own junior Grades unless accredited as a level 1 or level 2 umpire.

21. MISCELLANEOUS

- 21.1 The DHL will provide a hockey ball that is compliant with the rules of hockey for each Match of the Minor and Major Rounds.

PART 5: POINTS PROVISIONS

22. THE PREMIERSHIP LADDER

22.1 The DHL will ensure that accurate statistics are maintained:

- (a) of the results of the Matches in the Minor Rounds;
- (b) of the results of the Matches in the Major Rounds;
- (c) of the goals scored by Players,
- (d) penalty cards issued to Players:

in accordance with good practice and these Competition Rules.

22.2 The DHL will publish the Premiership Ladder publicly from time to time in the manner it deems appropriate (in good faith and as soon as possible).

22.3 During the Minor Rounds the DHL shall award competition points in the following manner (**Competition Points**):

- (a) in the event of a win: three (3) points to winning Team;
- (b) in the event of a draw: one (1) point to each Team; and
- (c) in the event of a loss: zero (0) points to losing Team.

22.4 The relative positions of each Team in each Grade on the Premiership Ladder shall be determined in the Minor Rounds as follows:

- (a) number of Competition Points;
- (b) number of Matches won;
- (c) if still level: goal difference;
- (d) if still level: goals for;
- (e) if still level, then a ranking based on the results of the matches among (only) them shall determine their respective position.
- (f) If still level, shoot out (one on one) between both sides, Hockey Australia Tournament regulations for shoot outs will apply.

23. BEST AND FAIREST

23.1 At the completion of each Match during the Minor Rounds (other than Matches for under 11's) the Umpires shall award best and fairest points to players in the following manner:

- (a) 3 points;
- (b) 2 points; and
- (c) 1 point on the Team Cards.

23.2 Subject to Competition Rule 23.3, at completion of the Minor Rounds the Player in each Grade with the highest number of points shall be declared the best and fairest Player for that Grade for the Playing Season.

24. PLAY THE WHISTLE

At the completion of each Match during the Minor Rounds (other than Matches for under 11's) the Match Officials shall jointly award 1 "play the whistle" point between the Teams in whatever manner they see fit (including not awarding the point).

25. CLUB CHAMPIONSHIP

- 25.1 The DHL shall award the Championship Trophy to the Affiliated Club that, during the Minor Rounds (not including the Finals), displays the following attributes:
- (a) of sportsmanship; and
 - (b) achievement.
- 25.2 Affiliated Clubs accumulate points for the Championship Trophy in the following manner:
- (c) the awarding of points:
 - (i) one (1) point awarded for a Team in the Senior Grade that wins a Match; and
 - (ii) one (1) point awarded for a Team in a Junior Grade that wins a Match.
 - (iii) Accumulation of play the whistle points
 - (d) the deduction of points:
 - (i) if applicable) one (1) point deducted if the Affiliated Club fails to supply an Umpire for Senior Grade Matches;
 - (ii) one (1) point for each Player receiving either a yellow or red personal penalty suspension during a match as a result of Competition Rule 29; and
- 25.3 In the event that an Affiliated Club has more than one (1) team in any Grade then only the highest ranked team from that Affiliated Club in that Grade will be eligible to be considered in the Club Championship points.
- 25.4 In the event there is more than one Affiliated Club with the same number of club championship points then the Affiliated Club who will be awarded the Championship Trophy will be determined in the following sequence:
- (a) the Affiliated Club with the least number of points deducted in accordance with Competition Rule 25.2(b).
 - (b) if still tied: the Affiliated Club with the most Matches won during the Competition (for both Senior Grades and Junior Grades);
 - (c) if still tied: the Affiliated Club with the most Matches won for the Junior Grades during a Playing Season;
 - (d) if still tied: the Affiliated Club with the most Matches won for the Senior Grades during a Playing Season; and
 - (e) if still tied: the Affiliated Club with the most “play the whistle” points.

26. TROPHIES

- 26.1 The Board will determine in writing, from time to time, the manner in which it deals with its property. However, in the absence of such a determination, if a shield or trophy is temporarily loaned to an Affiliated Club then:
- (a) the Affiliated Club will pay a fully refundable deposit (prescribed in the budget) to the DHL prior to taking possession;
 - (b) DHL will repay the deposit to the Affiliated Club upon the return of the object in the same condition (fair wear and tear excepted); and

(c) the Affiliated Club will be charged the replacement value if it fails to return the object within 30 days of being requested by DHL.

26.2 For the avoidance of doubt, any chattel (including any shield or trophy):

(a) purchased for; or

(b) donated to, the chattel remains the property of the DHL.

PART 6: PENALTY PROVISIONS

27. BEHAVIOUR

27.1 To ensure that the integrity of hockey is upheld:

- (a) members of all Affiliated Clubs must comply with the Code of Conduct;
- (b) members of all Affiliated Clubs must not to make derogatory comments in the public arena (including on any social media platform) regarding:
 - (i) the performance of Match Officials;
 - (ii) other Affiliated Clubs;
 - (iii) Players; or
 - (iv) any member of any Affiliated Club,

27.2 A breach of Competition Rule 27 is an offence and will be dealt with in accordance with Competition Rule 29. A guide to which breaches of the Competition Rules and the Code of Conduct will be penalised is contained within section 40.

28. PENALTIES

28.1 The following are breaches of these Competition Rules and will result, automatically, with a penalty being imposed by the Board:

- (a) a Non-Compliant Player participating in a Match;
- (b) a Player who is suspended pursuant to Competition Rule 29 participating in a Match;
- (c) a Team providing an incorrect or incomplete Team Card (including tampering with a Team Card).

28.2 The Board will impose the following penalties against the relevant Affiliated Club and Team for each breach of Competition Rule 28.1:

- (a) a fine in accordance with Competition Rule 31.3; and
- (b) the result of the relevant Match will be the greater of:
 - (i) the game score; or
 - (ii) a score line of 5-0 against the breaching Team.

28.3 If an Affiliated Club breaches Competition Rule 15 then:

- (a) in the first instance
 - (i) three (3) club championship points will be deducted for every week or part thereof that the Core Player nominations are not received;
- (b) in any subsequent instance:
 - (i) three (3) Competition Points will be deducted for every week or part thereof that the Core Player nominations are not received; and
 - (ii) a fine in accordance with Competition Rule 31.3 for the breaching Team.

28.4 Irrespective of any penalties imposed on an Affiliated Club or Team in accordance with Rule 28, any individual best and fairest votes and / or penalty cards will be retained by any individual player from the match; unless they are a Core Player playing in a lower grade, their individual best and fairest votes and goals will be disregarded.

29. PERSONAL PENALTIES

- 29.1 Umpires will, subject to their own discretion, endeavour to issue a verbal warning in relation to any breach of the Hockey Rules (or these Competition Rules) prior to issuing a Personal Penalty.
- 29.2 Pursuant to the Hockey Rules any Umpire or Technical Official may award a personal penalty to a Player or Team official during a Match and, in the event such a penalty is awarded the issuing Umpire or Technical Official must ensure details are recorded on the Team Card including:
- (a) the individual the subject of the penalty;
 - (b) the colour of the card awarded; and
 - (c) the reason for issue.
- 29.3 In the event that a Personal Penalty is awarded by an Umpire or Technical Official then the Hockey Rules determine the period of suspension during the Match.
- 29.4 The Board has determined, to ensure fairness and sportsmanship to impose a suspension system during the Competition.
- 29.5 If any Player:
- (a) accumulates three (3) yellow cards during Competition then that Player is automatically suspended from participating as a Player in any Match (for any Grade) for the following Round;
 - (b) accumulates a red card during the Competition then that Player is automatically suspended from participating as a Player in any Match (for any Grade) for the following round;
 - (i) The tribunal reserves the right to increase the suspension of a player who receives a red card;
 - (c) receives two yellow cards for the same offence in a match this equates to Red Card;
 - (d) receives a red card and a yellow card for the same offence in a match, the yellow card will not be counted under 29.5a;
 - (e) is suspended and that Player's team is not scheduled to play, for whatever reason, that does not constitute as a Match for the purpose of a suspension pursuant to this Competition Rule;
 - (f) has completed their suspension, for clarity, that player shall return to competition with a clean record.
- 29.6 The Executive Officer or HNT will notify the relevant Player and Affiliated Club in writing of any suspension by Wednesday of the upcoming Round.
- 29.7 Each Umpire may:
- (a) request, prior to the next Round commencing, that the Board investigate further the conduct of a Player who has been awarded a personal penalty.

30. PROTESTS/COMPLAINTS

- 30.1 Any matter of protest, allegation, charge or any infringement of these Competition Rules reported to the Board:
- (a) via the Team Cards; or
 - (b) via written statement

may be considered by the Board.

- 30.2 The Board is to determine the matter in the manner it sees fits but in accordance with:
- (a) procedures of and principles of:
 - (i) good administration;
 - (ii) due process; and
 - (iii) natural justice, and
 - (b) the matter must be determined within seven (7) business days of it being reported to the Board;
- 30.3 For the avoidance of doubt the Board may, on its own initiative, refer matters to the Tribunal including breaches of these Competition Rules by an Affiliated Club or player.
- 30.4 The Board has the following specific powers:
- (a) if a matter is in relation to the result of a Match then the Board may:
 - (i) uphold the result of the Match;
 - (ii) alter the result of the Match; or
 - (iii) order the Match to be replayed,
 - (b) if a matter is in relation to an alleged breach of these Competition Rules then the Board may:
 - (i) dismiss the alleged breach; or
 - (ii) determine the alleged breach occurred and:
 - a) impose a fine; and/or
 - b) impose a suspension;
 - (c) any ancillary powers in relation to the above.

31. FINES

- 31.1 The Executive Officer is empowered to collect any monies payable under these Competition Rules and to remove competition points.
- 31.2 If a fine or the removal of competition point is imposed pursuant to these Competition Rules then:
- (a) individuals must pay within seven (7) days of the date of the issue of the fine (individuals are unable to participate in any Match until the fine is paid in full); and
 - (b) an Affiliated Club must pay the fine within fourteen (14) days of the date of issue of the fine (Affiliated Clubs are ineligible to participate in Finals if the fine is overdue until the fine is paid in full).

31.3 The schedule of fines which are to be determined and imposed by the Board for strict liability matters are as follows:-

Description	Competition Rule reference	Amount:	Match Point / Penalty
Fines			
Failure to nominate Core Players	Competition Rule 15.1 (a)	\$100.00	Forced Loss
Playing a Non-Compliant Player	Competition Rule 12.3 & 15.4	\$25.00	Forced Loss
Failure to submit a Team Card	Competition Rule 17.1	\$25.00	
Forfeiting without prescribed notice	Competition Rule 18.1	\$100.00	Forced Loss
Failure of a Team to take to the Field within ten (10) minutes of the scheduled commencement	Competition Rule 18.2 & 18.3	\$30.00	
Team Withdrawal	Competition Rule 10.4	\$25.00	
Failure to comply with Uniform requirements	Competition Rule 8.2	\$10.00 per player	
Failure to supply an umpire, if applicable	Competition Rule 20.1	\$50:00	1 point
Failure to supply a Technical Bench Official, if applicable	Competition Rule 19.1	\$25.00	

PART 7: DARWIN SPECIFIC PROVISIONS

32. C GRADE (OR THE LOWEST SENIOR GRADE)

32.1 A maximum of eighteen (18) Players are permitted in the lowest Senior Grade.

[Note: as at the date of these Competition Rules the lowest Senior Grade is C Grade].

33. ON THE FIELD/OFF THE FIELD

33.1 The only persons permitted on the Field are the Umpires, the Players or persons specifically invited by the Umpires.

33.2 Subject to these Competition Rules, there shall be no coaching (including guidance) of any Team from the outside the designated dugout.

[Note: See Competition Rules 16.6 and 16.7 regarding coaches being permitted on the Field during the Match for some Junior Grades].

34. INTERRUPTION AND POSTPONEMENT OF MATCHES –

34.1 If the Fields are:

- (a) unfit; or
- (b) unavailable, in accordance with the approved Fixtures then the DHL must reschedule the relevant Matches.

34.2 If a Match is interrupted by the Match Officials, including for:

- (a) bad weather including thunderstorms and lightning;
- (b) heavy rain;
- (c) lack of lighting; or
- (d) safety,

the Match should be resumed within thirty (30) minutes of the cessation of play if the reason for the interruption is no longer relevant.

34.3 If the Match cannot be resumed then the Match shall be suspended and

- (a) if:
 - (i) the Match has commenced; and
 - (ii) the 3rd quarter has been completed in Senior, Under 17 and Under 14 matches,

the score as at the time of the cessation of play will be deemed to be the final score for that Match.

- (b) otherwise if the Match is rescheduled then, at the approval of the Executive Officer:
 - (i) the time and date must be within 1 month of the original match, or prior to the commencement of the major rounds, whichever is the earlier.
 - (ii) the Match will resume with the time remaining and score as at the time of the cessation of play with as many of the same participants from the original match as possible: replacements are not permitted.
 - (iii) for Matches during the Major Rounds the Match shall resume from the point of play on the Field as at the time of the cessation of play.

- (iv) If the above cannot be achieved in good faith, the score at the time of the suspension will be deemed as the final score.

34.4 Affiliated clubs may apply in writing for the postponement of a match. Submissions must be received by the Chair of the DHL AP one (1) week prior to scheduled game.

The Chair of the DHL AP will inform both teams of the DHL AP decision.

PART 8: MAJOR ROUNDS PROVISIONS

35. PARTICIPATION REQUIREMENTS

35.1 To participate in any Finals:

- (a) an Affiliated Club must have no monies unpaid or outstanding to the DHL; and
- (b) a Player must have no monies unpaid or outstanding to the DHL.

36. MAKE-UP OF THE FINALS

36.1 At completion of the Minor Rounds the first four (4) Teams on the Premiership Ladder in each Grade shall compete in the Major Rounds.

36.2 If the Teams are equal an equal number of Competition Points then the position and eligibility is determined in accordance with Rule 22.4

37. PLAYER ELIGIBILITY FOR Major Rounds

37.1 Any Player who has participated as a Player:

- (a) with their Affiliated Club for less than five (5) Minor Rounds will be ineligible to participate as a Player in any Major Round.

37.2 Subject to these Competition Rules, a Player may not participate in the Major Rounds for a lower Grade than their eligibility allows

37.3 The requirement for eligibility to participate as a Player in the Major Rounds are as follows:

Category:	Requirement:	Examples:
Juniors	Played 5 Minor Rounds for their registered Club in the age division applicable based on date of birth.	<p>An Under 11 player who has played five (5) minor rounds may play in the Under 14 or Under 17 Grade finals matches</p> <p>An Under 14 player who has played five (5) minor rounds is eligible for both Under 14 and Under 17 Grade finals matches</p> <p>An Under 17 player who has played five (5) minor rounds is eligible to play in Under 17 and senior grade finals matches.</p> <p>Any junior player who is a regular senior grade player will also be bound by Competition Rules 14 & 15.</p>

Seniors	Played 5 Minor Rounds for their registered Club and must comply with Competition Rules 14 and 15	<p>Competition Rule 14 restricts any player who has played A Grade from playing C Grade at any time during the season without the consent of the Executive Officer.</p> <p>Competition Rule 15 caters for Core players who cannot play in a grade below their core player status.</p> <p>There is no restriction on any player playing up a grade in the finals series provided they have played the minimum five (5) minor rounds for their registered Club.</p>
---------	--	---

38. MAJOR ROUNDS

38.1 The Major Rounds for each Grade will be organised and played in the following manner:

- (a) the first semi-final will be played between the first and second Teams on the Premiership Ladder and the winner of that Match will advance to the Grand final;
- (b) the second semi-final will be played between the third and fourth Teams on the Premiership Ladder;
- (c) the preliminary final will be played between the loser of the first semi-final and the winner of the second semi-final; and
- (d) the grand final will be played between the winner of the first semi-final and the winner of the preliminary final.

39. RULES FOR MAJOR ROUNDS

39.1 If, during the Senior Grade and Under 17 Major Rounds, the score is equal at the completion of regulation playing time (according to the rules of hockey) then:

- (a) an additional fourteen (14) minutes will be played, following a five (5) minute break, in two (2) seven (7) minute periods in which the first goal scored wins the Match; and
- (b) if the score is equal at the end of extra time, the match progresses to a shootout competition.

39.2 If, during the Under 14 Junior Grade Major Rounds, the score is equal at the completion of regulation playing time (according to the rules of hockey) then:

- (a) an additional ten (10) minutes will be played, following a five (5) minute break, in two (2) five (5) minute periods in which the first goal wins the match; and
- (b) if the score is still equal then the team that finished higher on the Premiership Ladder at the end of the Minor Round is the winner.

PART 9: SUBCOMMITTEE PROVISIONS

40. MATCH TRIBUNAL

40.1 The Match Tribunal:

- (a) Will consist of three (3) individuals who have expertise in a particular area (such as umpiring, player, legal profession) and be of good standing in the community;
- (b) will be appointed for a particular incident; and
- (c) shall investigate and determine matters referred to it by the Board pursuant to Competition Rule 29.

[Note: The Board will in accordance with Competition Rule 29, upon receipt of a protest or complaint, will determine whether the matter should be referred to a Tribunal.]

40.2 The Executive Officer may appoint the Tribunal members ensuring:

- (a) a Tribunal member is not a member of the Affiliated Club the subject of the determination; and
- (b) the Tribunal member has the necessary skills in relation to the matter the subject of the referral.

40.3 The Tribunal is to determine the procedures to be followed in connection with any matters referred to it however:

- (a) such procedures must be in accordance with:
 - (i) good administration;
 - (ii) principles of due process; and
 - (iii) principles of natural justice'
- (b) a matter must be determined within seven (7) business days of being referred to the Tribunal or as otherwise determined by the Tribunal;
- (c) in considering a penalty/sanction may consider:
 - (i) any extenuating circumstances;
 - (ii) the severity of the incident;
 - (iii) previous incidents involving the person; and
 - (iv) any other matter which the Tribunal considers relevant.
- (d) the Tribunal must report its findings in writing to:
 - (i) the parties involved; and
 - (ii) the Board, as soon as possible.

40.4 The Tribunal may utilise the following chart as a guide to the level of penalty imposed on an individual or Affiliated Club if found guilty of an offence:

(a) For individuals –

Offence	Suspension Guideline
Umpire dissent:	
- disputing an Umpire's decision	1 Round
Umpire abuse (verbal or physical whether on or off the Field)	
- use of lewd gestures	1 Round
- striking an Umpire	Life
Misconduct (whether on or off the Field)	
- breach of the Code of Conduct	1 Round
- breach of these Competition Rules	1 Round
- persistent and deliberate breach of the Hockey Rules	1 Round
- persistent and deliberate breach of the Code of Conduct	1 Round
- abuse of equipment, either personal or DHL	2 Rounds
- abusive conduct	4 Rounds
- threatening a Player, official, or Umpire	4 Rounds
Striking (on the Field)	
- punching or deliberately elbowing any other Player	4 Rounds
- deliberately kicking any other Player	4 Rounds
- deliberately striking any other Player with a stick	8 Rounds
- second striking offence	1 year

(b) For Affiliated Clubs:

Offence	Suspension Guideline:
- breach of the Code of Conduct	\$150.00
- breach of these Competition Rules	\$150.00
- persistent and deliberate breach of the Code of Conduct	\$300.00

PART 10: HEALTH & SAFETY PROVISIONS

41. BLOOD POLICY

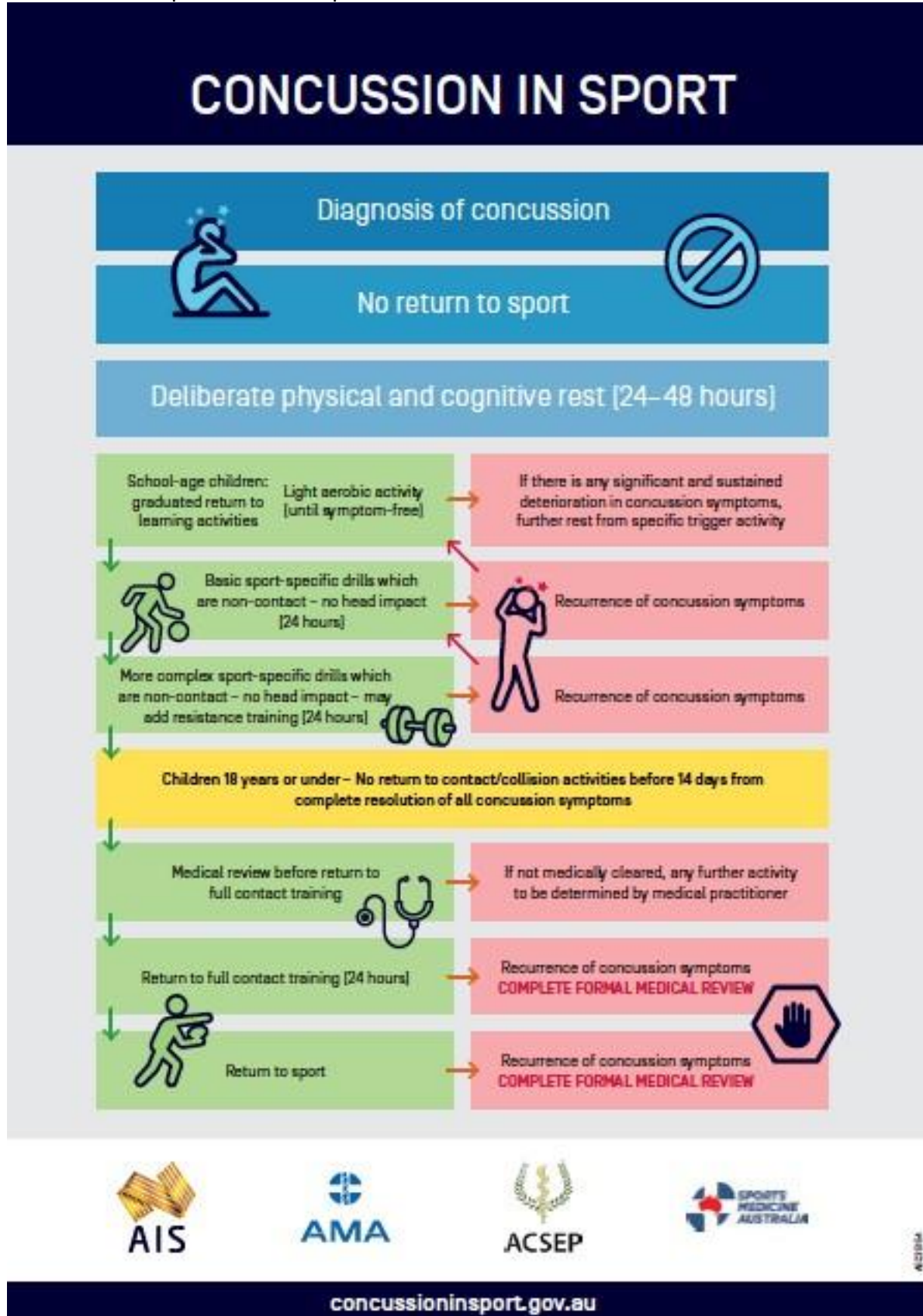
- 41.1 An umpire is required to call 'time off' when a player who is bleeding is noticed or an on-field player has indicated the presence of blood.
- 41.2 The player(s) in question is to leave the field of play to have the wound attended to. Play is to recommence once the player(s) has left the field of play and any blood has been cleaned from the pitch. The player(s) is not to return to the field until such a time that the bleeding has stopped and covered, and that all blood on the players clothing has been cleaned up or covered. This is assessed at the discretion of the technical bench.
- 41.3 Once the umpire is satisfied that all requirements have been met they will restart play.

42. CONCUSSION PROCESS

- 42.1 Hockey NT has a Concussion Guidelines document which should be utilised in conjunction with the below process should a participant be thought to be suffering from concussion.
- 42.2 If an Umpire is made aware of a player having suffered a knock to the head, in whatever circumstance, they are immediately to call "time off".
- 42.3 Any player suffering a head knock that displays **any** of the following clinical features either observed directly or reported by others **must** be removed from play:
- (a) Loss of consciousness or prolonged immobility (greater than 2 seconds)
 - (b) No protective action in fall to the ground (not bracing for impact)
 - (c) Impact seizure (stiffening arms or legs on impact)
 - (d) Balance disturbance (loss of control over movements)
 - (e) Dazed, blank/vacant stare or not their normal selves
 - (f) Unusual behaviour change for the player
 - (g) Confusion or disorientation
 - (h) Memory impairment (e.g. fails Maddock's questions)
 - (i) Player reports concussion symptoms
- 42.4 To assist in Rule 42.3 (viii) the following style of questions can be asked of the player to assist in any assessment. These questions must be preceded by the statement: "I am going to ask you a few questions, please listen carefully and give your best effort";
- (a) What venue are we at today?
 - (b) Which half is it now?
 - (c) Who scored last in this game?
 - (d) What team did you play last week?
 - (e) Did your team win the last game?
- a.5 Failure of a participant to answer any of these questions satisfactorily must result in them not being allowed to resume playing in the match and they must be supported to seek professional medical advice / treatment – refer to the

Concussion Guidelines documentation which will be located in the Technical Bench folder during matches or can be accessed at www.hockeynt.asn.au

- a.6 Any player who is not permitted to resume in a match for the above reasons must receive a medical clearance from a qualified medical practitioner before they can participate in any future fixture.
- 42.6 The following Sports Concussion Assessment Tools (SCAT) have been adopted by the Sport Australia and the Australian Institute of Sport:
- (a) Adult SCAT 5:
<https://bjsm.bmj.com/content/bjsports/early/2017/04/26/bjsports-2017097506SCAT5.full.pdf>
 - (b) Child SCAT 5:
<https://bjsm.bmj.com/content/bjsports/early/2017/04/26/bjsports-2017097492childscat5.full.pdf>



Addendum to Competition Rules for Season 2020

These rules are in addition to or replace the competition rules referred to herein.

The following rule amendments are specific and only apply to the DHL Hockey Season 2020 and the 10-round competition. They should be read in conjunction with the DHL Competition Rules as published.

A1 TEAM NOMINATIONS

Underpinned by Rule 10. Team Nominations and Team Withdrawals.

1.1 Nominations from Member Clubs for junior boys and girls and senior men's and women's teams are to be received by the Executive Officer not later than 4pm on Thursday 28 May 2020.

1.2 The 2020 Competition draw will be produced based on those nominations and will be distributed to all Member Clubs not later than 4pm on Thursday 4 June 2020.

A2 CORE PLAYERS

Underpinned by Rule 15.1(a)(i). Core Players

Prior to the commencement of the third Minor Round, each Affiliated Club shall nominate to the Executive Officer a completed list of seven (7) Core Players for each Team nominated for A Grade and B Grade by the Affiliated Club.

[Note: 7 Core Players in total for each Team.]

A3 ELIGIBILITY FOR FINALS

Underpinned by Rule 37. Player Eligibility for the 2020 Season shall be as follows:

37. PLAYER ELIGIBILITY FOR Major Rounds

37.1 Any Player who has participated as a Player:

(a) with their Affiliated Club for less than three (3) Minor Rounds will be ineligible to participate as a Player in any Major Round.

37.2 Subject to these Competition Rules, a Player cannot participate in the Major Rounds for a lower Grade than their eligibility allows

37.3 The requirement for eligibility to participate as a Player in the Major Rounds are as follows:

Category:	Requirement:	Examples:
Juniors	Played three (3) Minor Rounds for their registered Club in the age division applicable based on date of birth.	<p>An Under 11 player who has played three (3) minor rounds may play in the Under 14 or Under 17 Grade finals matches</p> <p>An Under 14 player who has played three (3) minor rounds is eligible for both Under 14 and Under 17 Grade finals matches</p> <p>An Under 17 player who has played three (3) minor rounds is eligible to play in Under 17 and senior grade finals matches.</p> <p>Any junior player who is a regular senior grade player will also be bound by Competition Rules 14 & 15.</p>
Seniors	Played three (3) Minor Rounds for their registered Club.	<p>Competition Rule 14 restricts any player who has played A Grade from playing C Grade at any time during the season without the consent of the Executive Officer.</p> <p>Competition Rule 15 caters for Core players who cannot play in a grade below their core player status.</p> <p>There is no restriction on any player playing up a grade in the finals series provided they have played the minimum three (3) minor rounds for their registered Club.</p>

A4 INTERRUPTION AND POSTPONEMENT OF MATCHES

Should a match be deemed cancelled in accordance with Rule 34.1, 34.2 and 34.3(a), notwithstanding the provision of Rule 34.3(b)(i), wherever possible the match shall be rescheduled at the discretion of the Executive Officer in consultation with the Affiliated Clubs involved.

A5 UNDER 17s COMPETITION

- a The under 17s Competition will be an 11 per side competition; the match provisions under Rule 16.2 (or 16.3) shall apply.
- b Players shall be placed in a pool and be distributed evenly to form as many composite teams as possible.

- c Once allocated to a composite team the player shall remain with that team.
- d Players will be assessed and allocated points as follows:
 - i 3 points if player has played State or A Grade;
 - ii 2 points if player has played B Grade; or
 - iii 1 point if player has played C Grade or has played three (3) or more seasons.
- e Coaches may apply to a coaching position of these composite teams and be appointed by the Executive Officer having consulted with the Pathway's Manager and Affiliated Clubs.

A6 SPITTING

For the purposes of this rule, 'on the field' includes the dugouts and tunnels.

Notwithstanding an injury to the facial area, Hockey NT will not tolerate spitting on the field at any time, by anyone. Umpires shall be directed to deal with this offence as follows:

- a) A 10-minute, yellow card offence in the case of a junior match
- b) A red card offence in the case of a senior match
- c) The technical bench is authorised (and encouraged) to notify an umpire as soon as is reasonably practicable of witnessing the act.
- d) Any player who intentionally spits on another person during the course of a match on the field shall be issued a red card and the matter referred to Police.
- e) Any player who spits on another person off the field shall be deemed an automatic suspension and the offence shall be referred to the Police.

A7 Umpiring

Where an Affiliated Club fails to supply an Umpire as required under Competition Rule 20.1, the one match point penalty in the Schedule under Competition Rule 31.3 shall not apply.